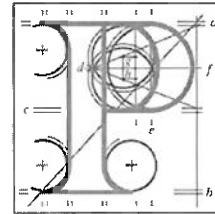


Our Case Number: ABP-314686-22



**An
Bord
Pleanála**

Development Applications Unit
The Manager
Development Applications Unit (DAU)
Government Offices
Newtown Road, Wexford
Co. Wexford
Y35 AP90

Date: 11 November 2022

Re: Change of use from former golf course, construction of 586 no. residential units (76 no. houses, 348 no. apartments, 162 no. Build to Rent apartments), creche and associated site works.
Former Bray Golf Club Lands, Off Ravenswell Road and Dublin Road, Bray, Co. Dublin and Co. Wicklow. (www.coastalquartershd2.com)

Dear Sir / Madam,

An Bord Pleanála has received your letter dated 10th November 2022 and notes that the observation in relation to the above-mentioned application has been withdrawn.

If you have any queries in relation to the matter, please contact the undersigned. Please mark in block capitals "STRATEGIC HOUSING UNIT" and quote the above mentioned reference number in any correspondence with An Bord Pleanála.

Yours faithfully,

Ashling Doherty
Executive Officer
Direct Line: 01-8737160

Tell
Glao Áitiúil
Facs
Láithreán Gréasáin
Riomhphost

Tel
LoCall
Fax
Website
Email

(01) 858 8100
1890 275 175
(01) 872 2684
www.pleanala.ie
bord@pleanala.ie

64 Sráid Maoilbhríde
Baile Átha Cliath 1
D01 V902

64 Marlborough Street
Dublin 1
D01 V902